

Drawers and accessories for office shelving

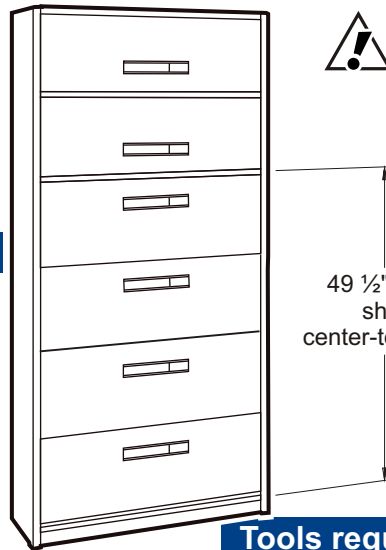


General Assembly Guide

- All required hardware is included.
- Please check the content with your packing slip.
- Read instructions carefully.
- Save this document for future reference.

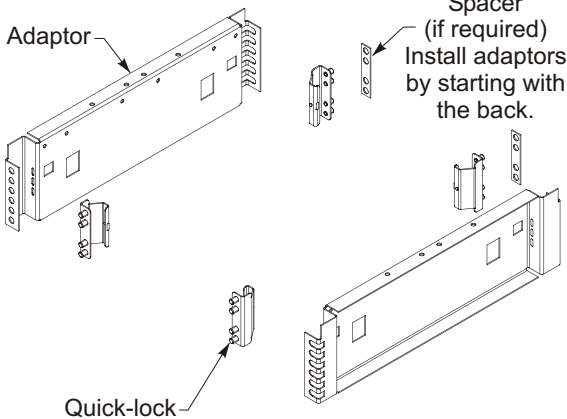


These accessories fit Spacesaver L+T posts shelving (with 3/4" shelves). They do not fit "case type" shelving.



49 1/2" max. shelf center-to-center

Hardware FO 5200



Tools required



Phillips #2

11/32"

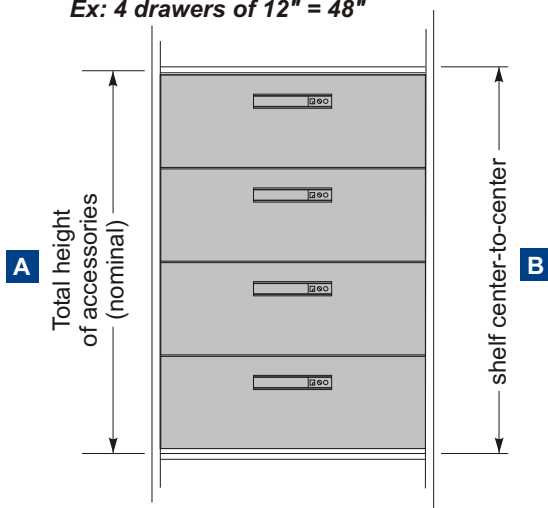
(For FO-5100 Flipper door)

Set up How to find your shelf center-to-center

Before beginning the assembly you must install the upper and lower shelf properly.

- 1 First, calculate the total height of the accessories to be installed.

Ex: 4 drawers of 12" = 48"



- 2 Then, find the total height in this chart.

A	
Height 5", 8", 11", 14", 17", 20", 23", 26", 29", 32", 35", 38", 41", 44", 47"	+
Height 7", 10", 13", 16", 19", 22", 25", 28", 31", 34", 37", 40", 43", 46"	+
Height 6", 9", 12", 15", 18", 21", 24", 27", 30", 33", 36", 39", 42", 45", 48"	+

- 3 Then add the corresponding measurement:

1"

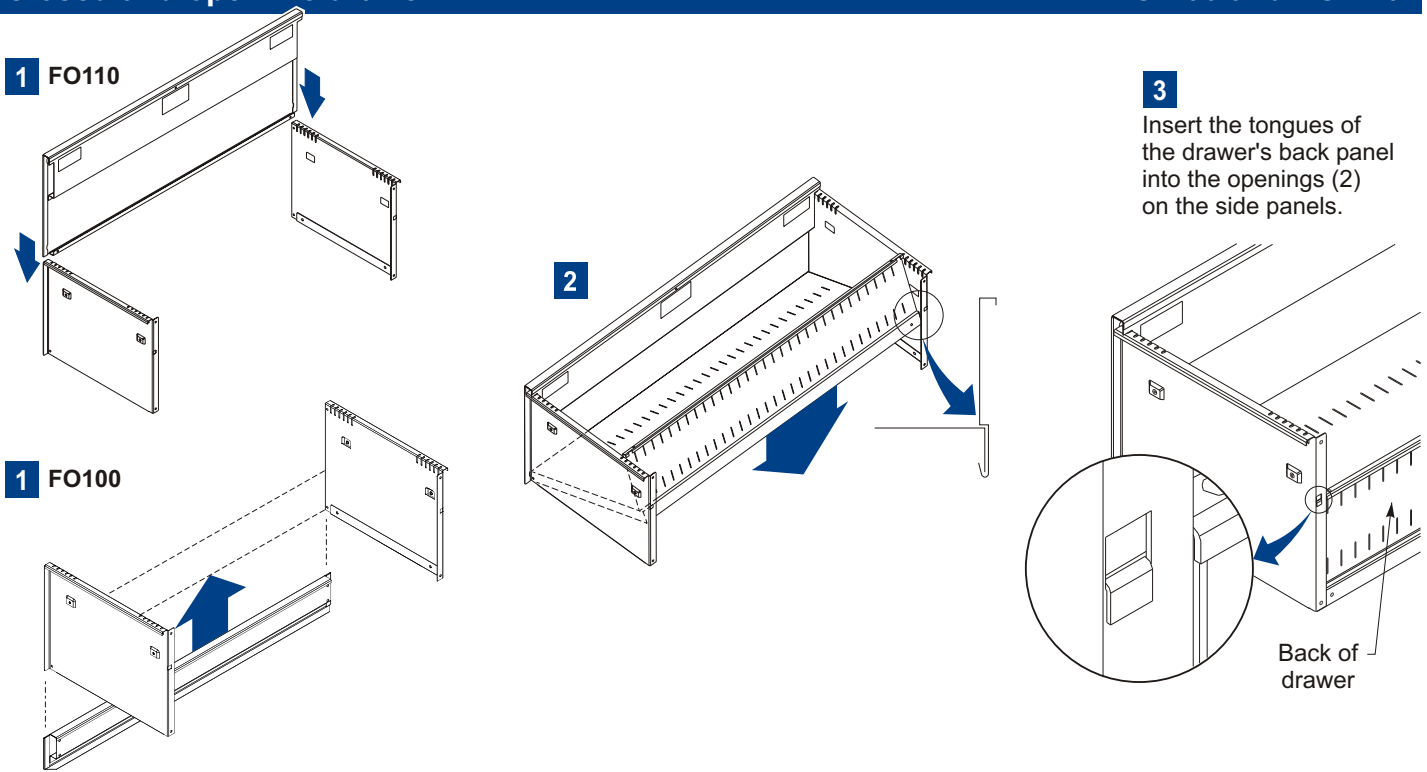
2"

1 1/2"

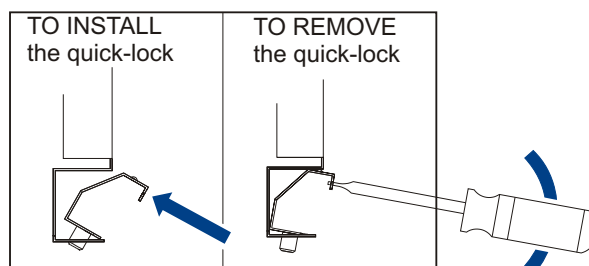
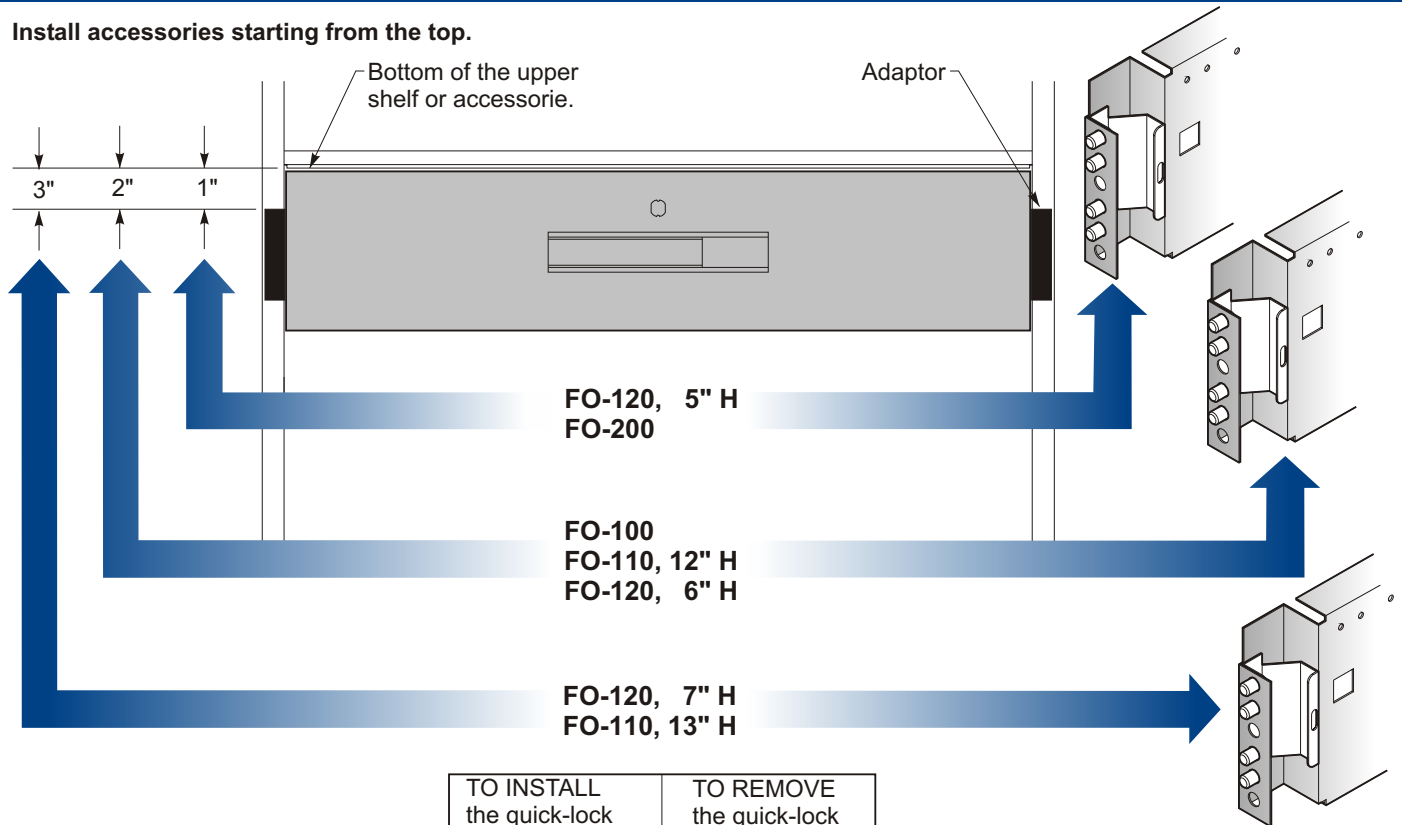
= shelf center-to-center

B

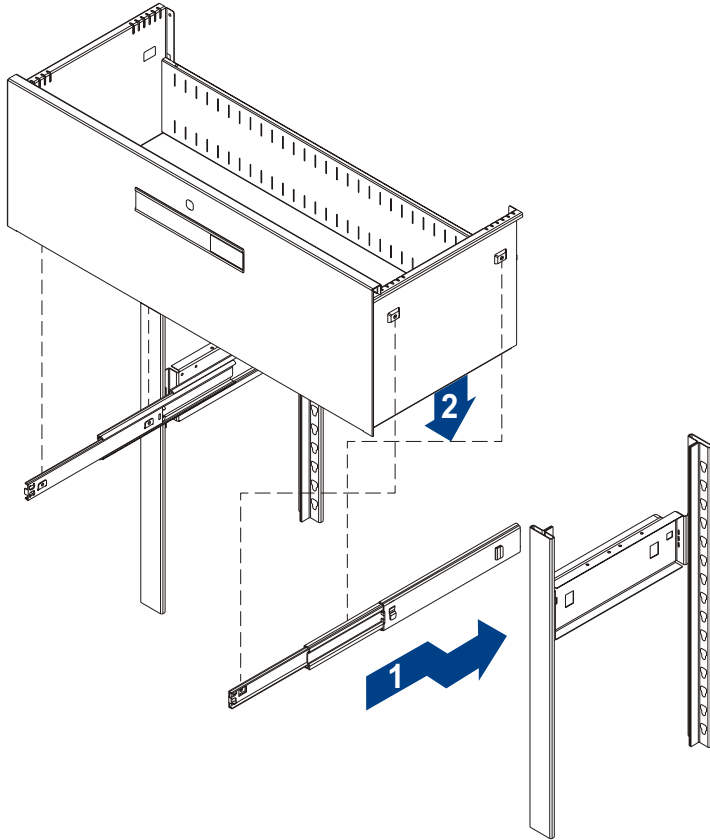
Ex: 48" + 1 1/2" = 49 1/2"



Install accessories starting from the top.



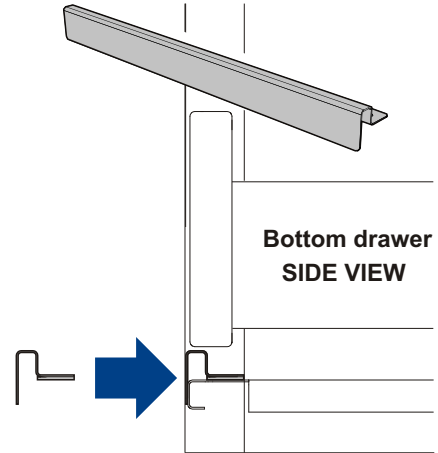
Drawer assembly



Filler FO3100

For GAP under the bottom drawer of the shelving.
(if you installed accessories starting from the top as specified)

- Remove the protector tape from the double-coated tape before installing the filler.

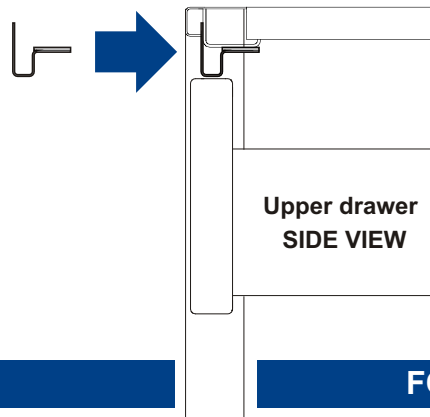


Bottom drawer
SIDE VIEW

Filler FO3100

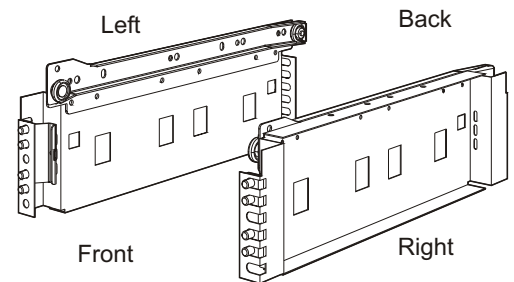
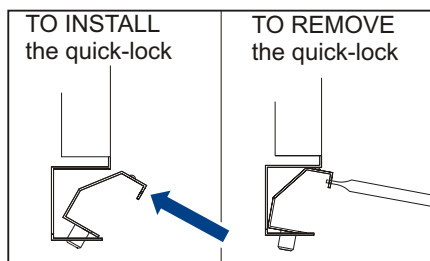
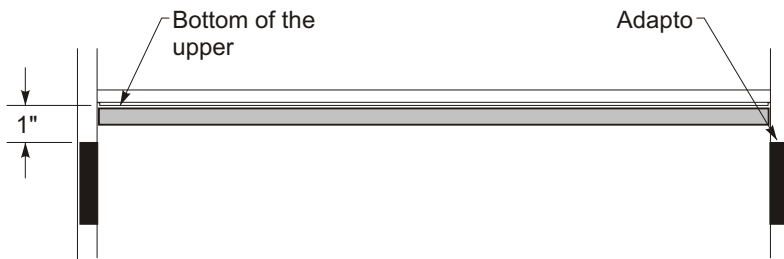
For GAP over the upper drawer of the shelving.
(if you have installed accessories starting from the bottom)

- Remove the protector tape from the double-coated tape before installing the filler.





Upper drawer
SIDE VIEW

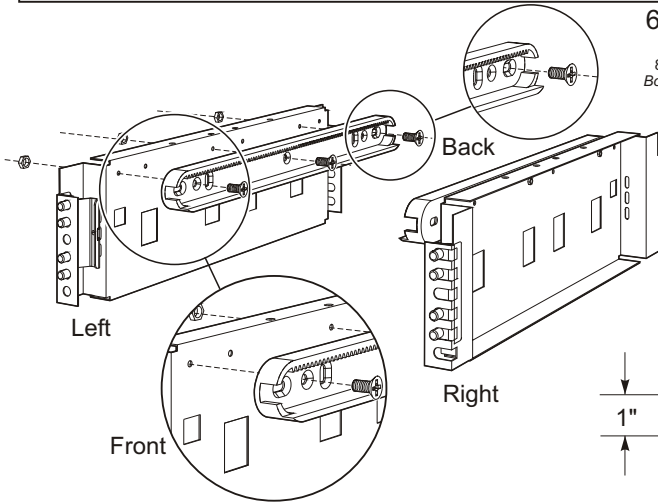
Reference shelf / Position of adaptors



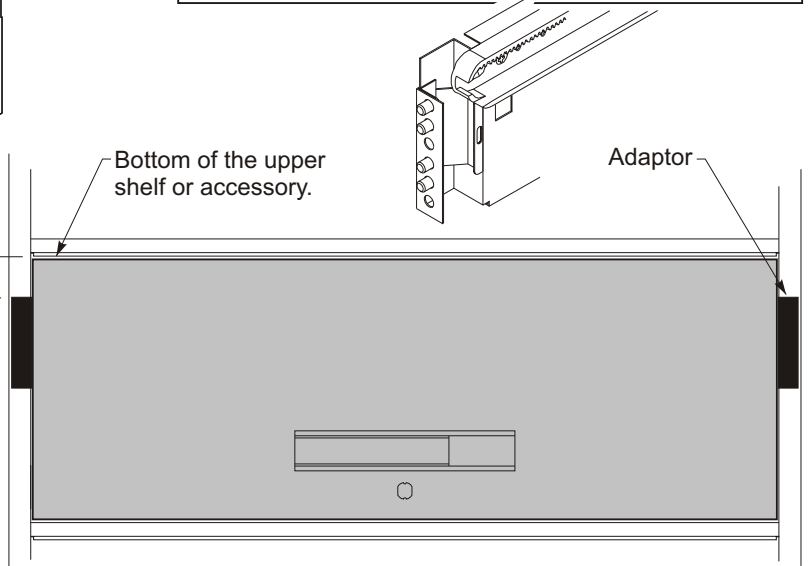
FO-5025

Adaptor pre-assembly

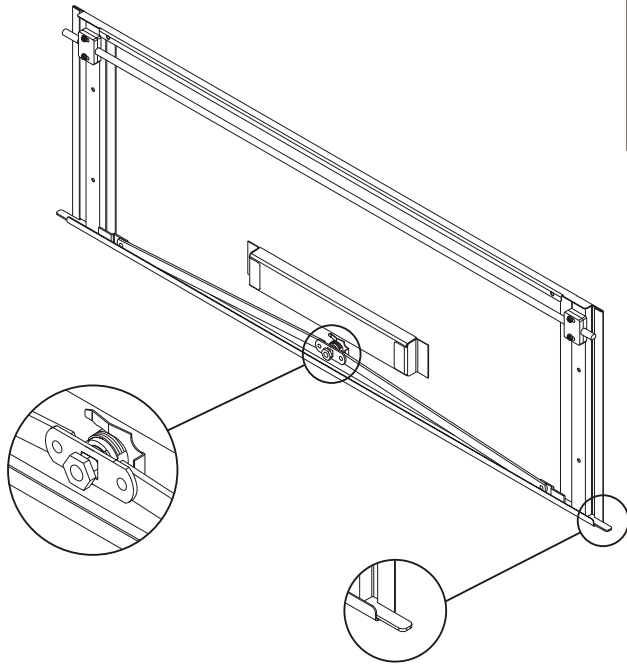
6x  6X 
8/32-1/2 bolts 8/32 nuts
Boulons 8/32-1/2 Écrous 8/32



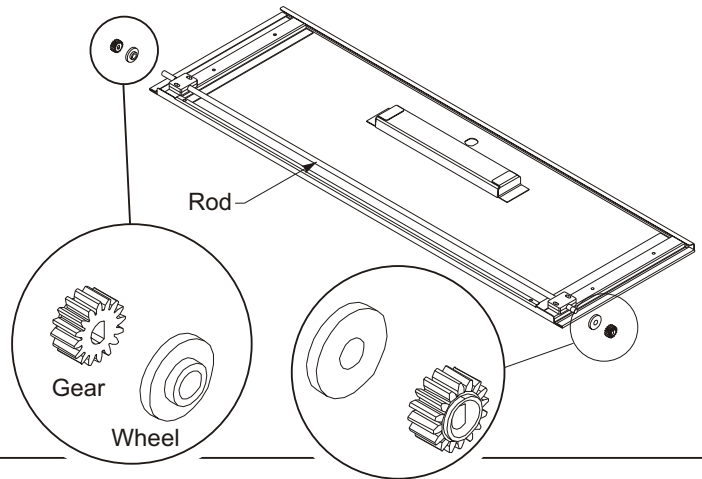
Position of adaptors



Lock assembly



Flipper door pre-assembly



Door assembly

