

Stacking Cabinet OT Line

Assembly Guide



Cabinet de Superposition Guide d'assemblage Ligne OT

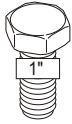
Hardware

Quincaillerie

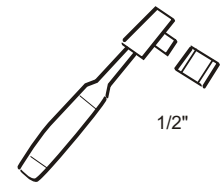
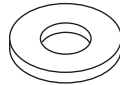
Tools required

Outils requis

5/16-18 bolts
Boulons 5/16-18



Washer
Rondelle plate



Assembly

Assemblage

- Using a hammer and a screwdriver, punch out the four knock outs of the lower cabinet top.

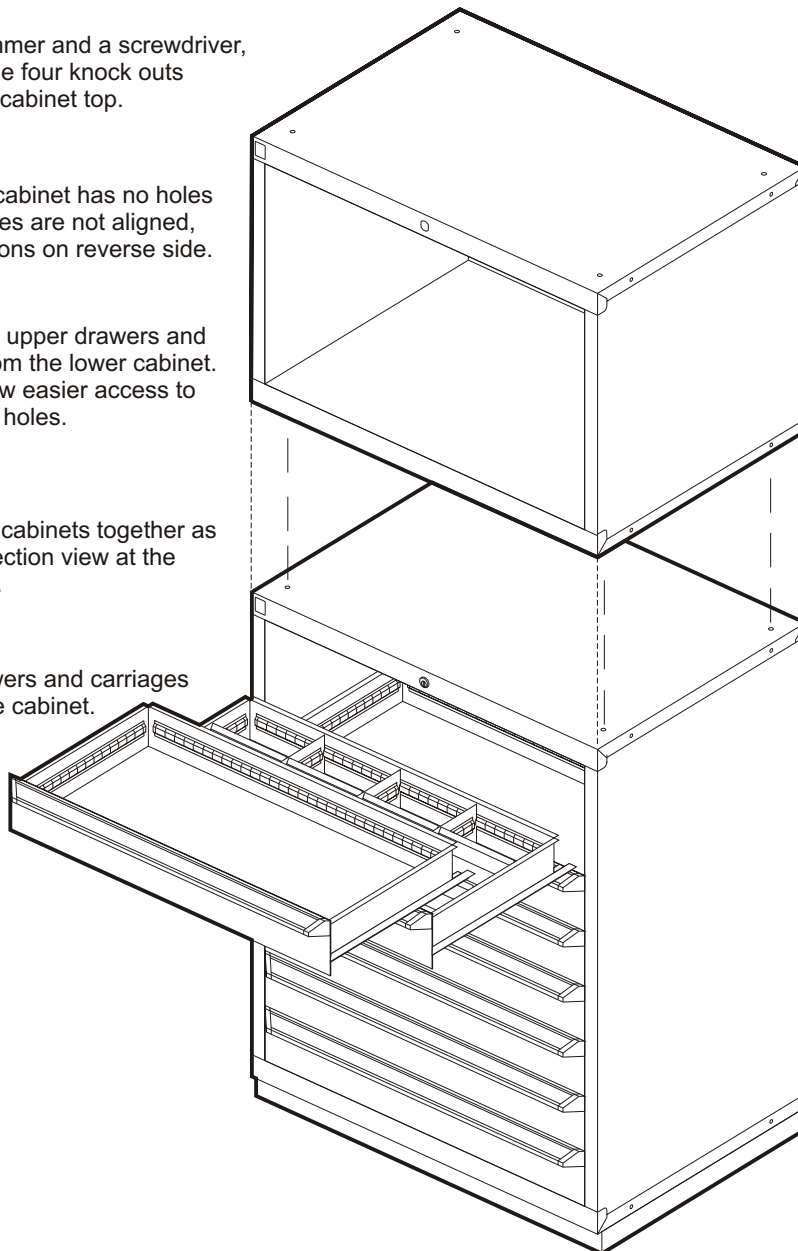
! Note

If the lower cabinet has no holes or if said holes are not aligned, see instructions on reverse side.

- Take out the upper drawers and carriages from the lower cabinet. This will allow easier access to the stacking holes.

- Bolt the two cabinets together as shown on section view at the bottom right.

- Put the drawers and carriages back into the cabinet.



- En utilisant un marteau et un tournevis, enfoncer les débouchures aux quatre coins du dessus du cabinet inférieur.

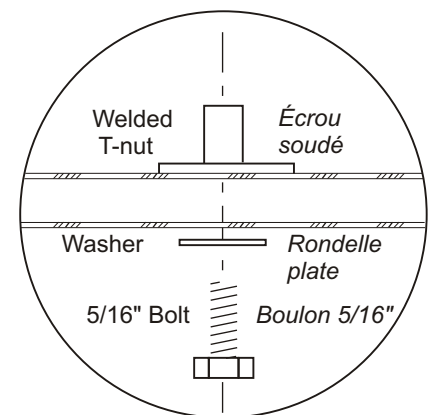
! Note

Si le cabinet du bas n'est pas percé ou que les trous ne sont pas alignés, suivre les instructions au verso.

- Enlever les tiroirs et chariots du haut du cabinet inférieur. De cette façon, les trous de superposition seront accessibles.

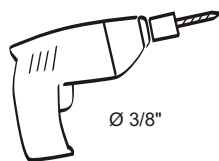
- Boulonner les deux cabinets ensemble tel qu'illustré sur la vue en coupe au bas de la page.

- Replacer les chariots et tiroirs dans le cabinet.

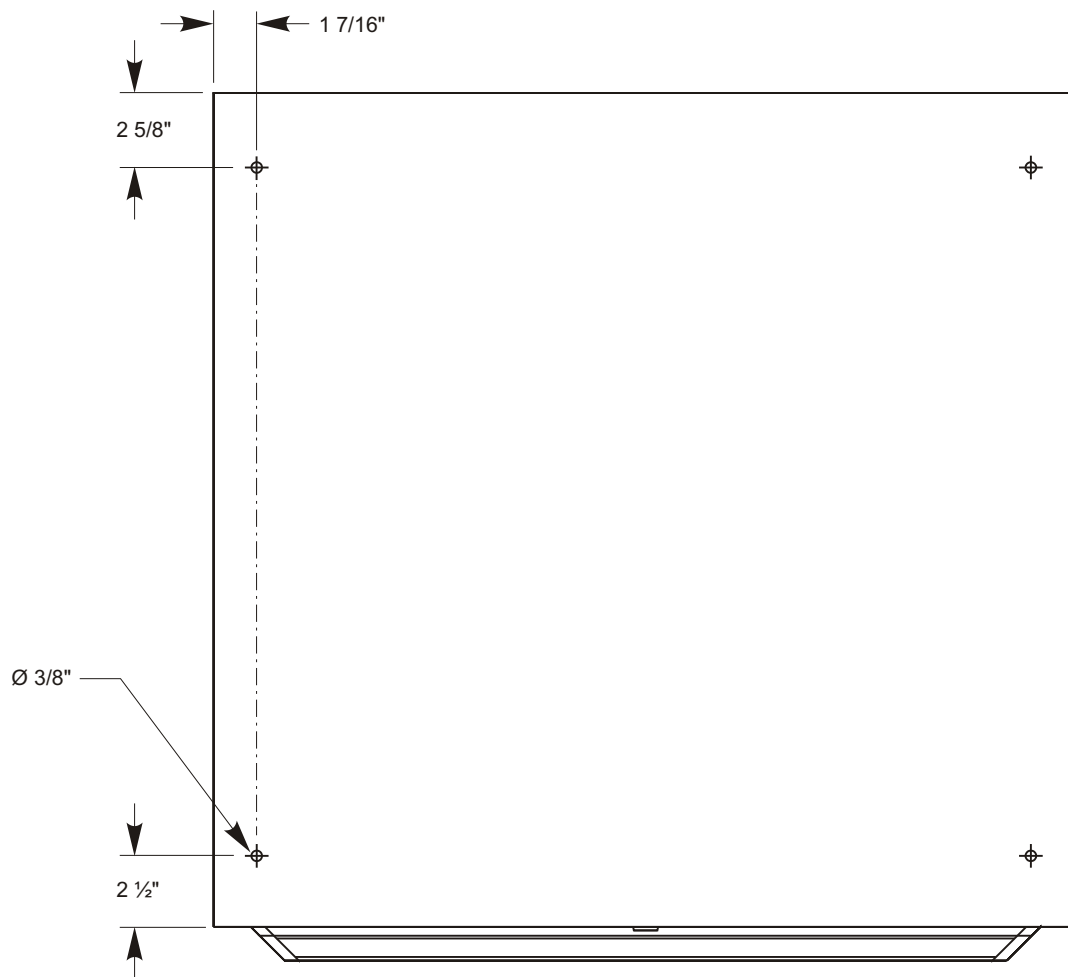


SECTION VIEW / VUE EN COUPE

If required, drill the lower cabinet as shown on view at the bottom.



Si requis, percer le cabinet du bas, tel qu'illustré ci-dessous.



TOP VIEW
VUE DU DESSUS