

Stacking Cabinet (OTTV) OT Line

Assembly Guide



Cabinet de Superposition (OTTV) Guide d'assemblage

Ligne OT

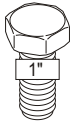
- All required hardware is included.
- Please check the contents with your packing slip.

- Toute la quincaillerie requise est incluse.
- Veuillez vérifier le contenu avec votre feuille de livraison.

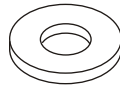
Hardware

Quincaillerie

5/16-18 bolts
Boulons 5/16-18

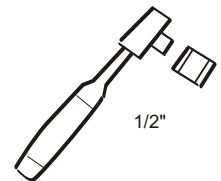


Washer
Rondelle plate



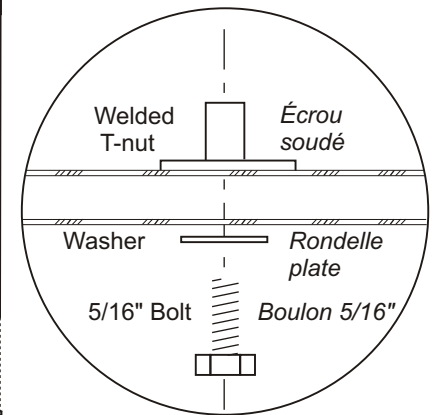
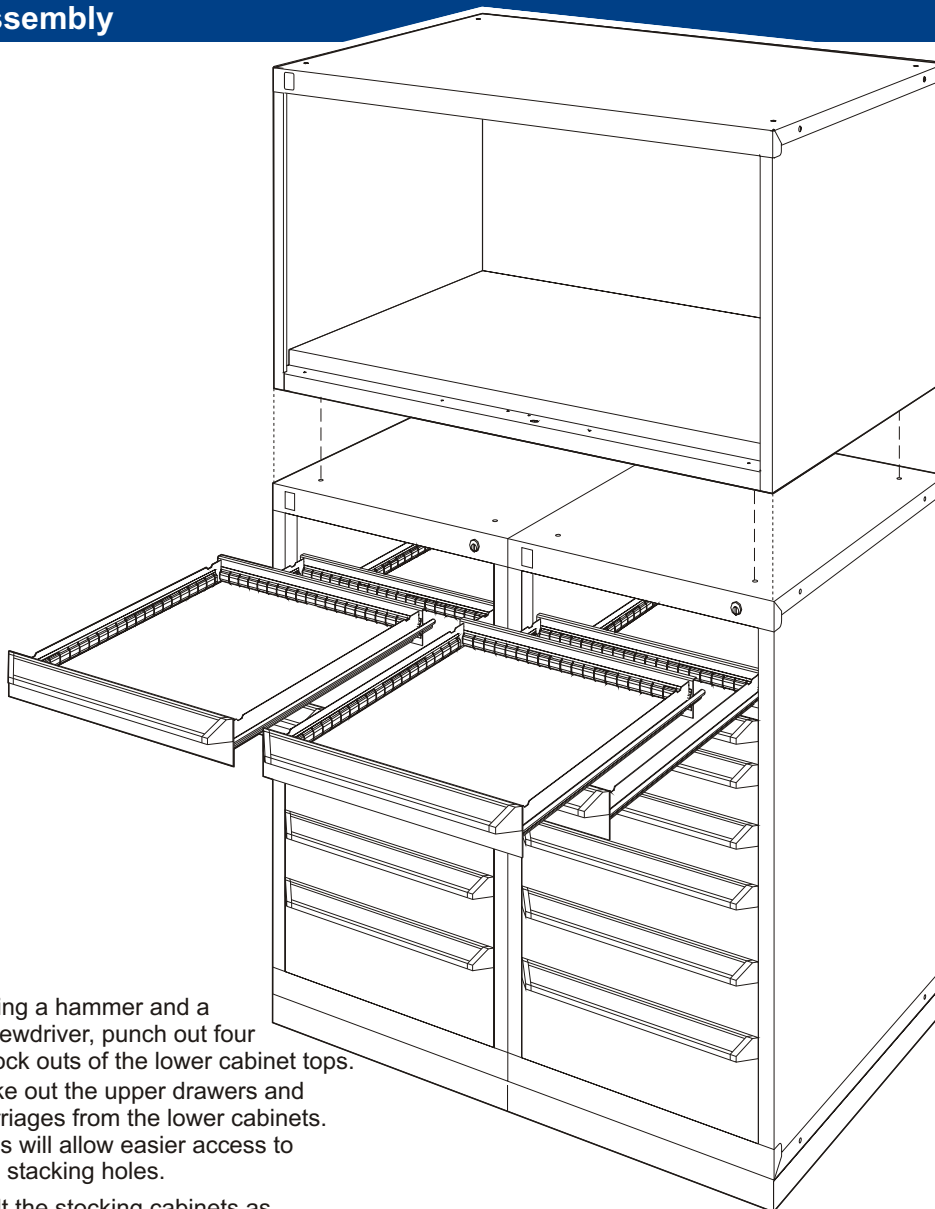
Tools required

Outils requis



Assembly

Assemblage



SECTION VIEW / VUE EN COUPE

1. Using a hammer and a screwdriver, punch out four knock outs of the lower cabinet tops.
2. Take out the upper drawers and carriages from the lower cabinets. This will allow easier access to the stacking holes.
3. Bolt the stacking cabinets as shown on section view at right.
4. Put the drawers and carriages back into the cabinets.

1. En utilisant un marteau et un tournevis, enfoncer les débouchures aux quatre coins des cabinets inférieurs.
2. Enlever les tiroirs et chariots du haut des cabinets inférieurs. De cette façon, les trous de superposition seront accessibles.
3. Boulonner le cabinet de superposition tel qu'illustré sur la vue ci-haut.
4. Remplacer les chariots et tiroirs dans les cabinets.

Doors for Stacking Cabinet OT Serie

Assembly Guide



Portes pour Cabinet de superposition Série OT

Guide d'assemblage

- All required hardware is included.
- Please check the contents with your packing slip.

- Toute la quincaillerie requise est incluse.
- Veuillez vérifier le contenu avec votre feuille de livraison.

Hardware

Quincaillerie

3/16" pop-rievet
Pop-rievet 3/16"

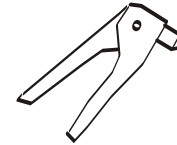


5/32" pop-rievet
Pop-rievet 5/32"



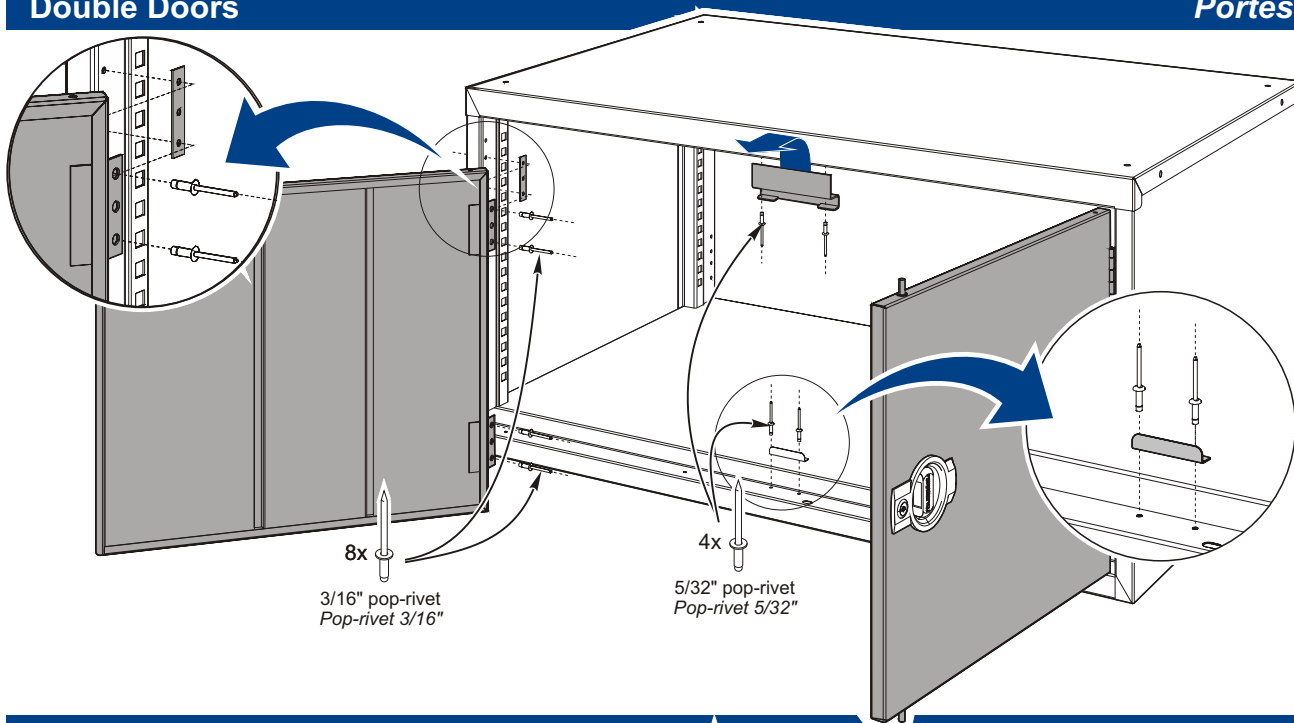
Tools required

Outils requis



Double Doors

Portes doubles



Sliding Doors

Portes coulissantes

