

# Electronic Locking Mechanism R Line

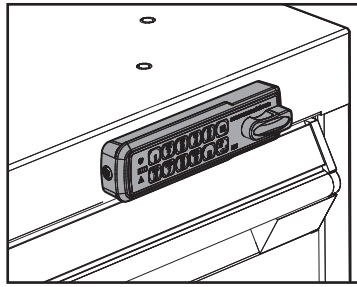
Assembly Guide



# Mécanisme de verrouillage électronique Ligne R

Guide d'assemblage

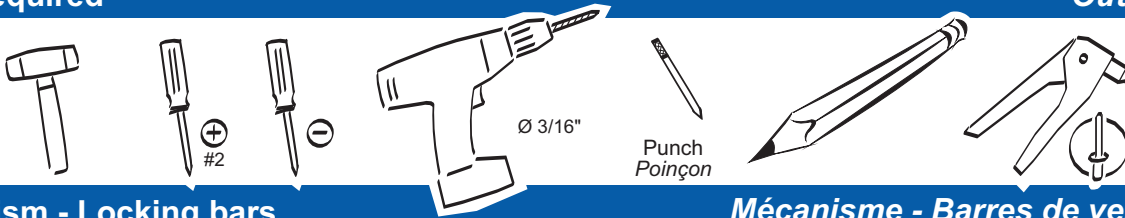
- All required hardware is included.
- Please check the contents with your packing slip.
- Read instructions carefully.
- Save this document for future reference.



- Toute la quincaillerie requise est incluse.
- Veuillez vérifier le contenu avec votre feuille de livraison.
- Lisez attentivement les instructions.
- Conservez ces instructions pour référence future.

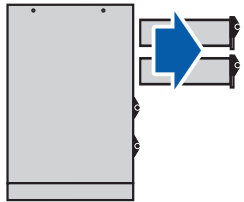
## Tools Required

## Outils requis



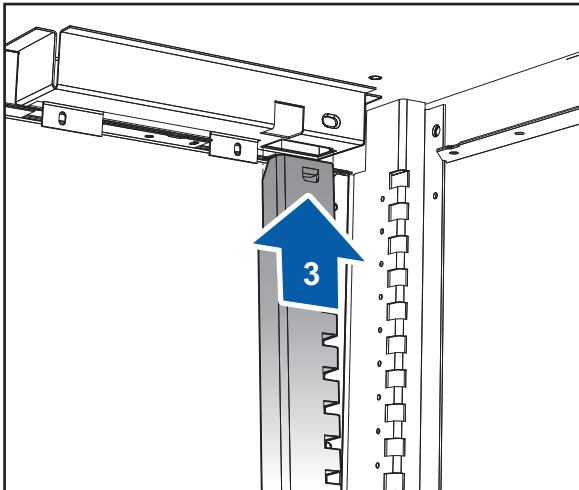
## Mechanism - Locking bars

## Mécanisme - Barres de verrouillage

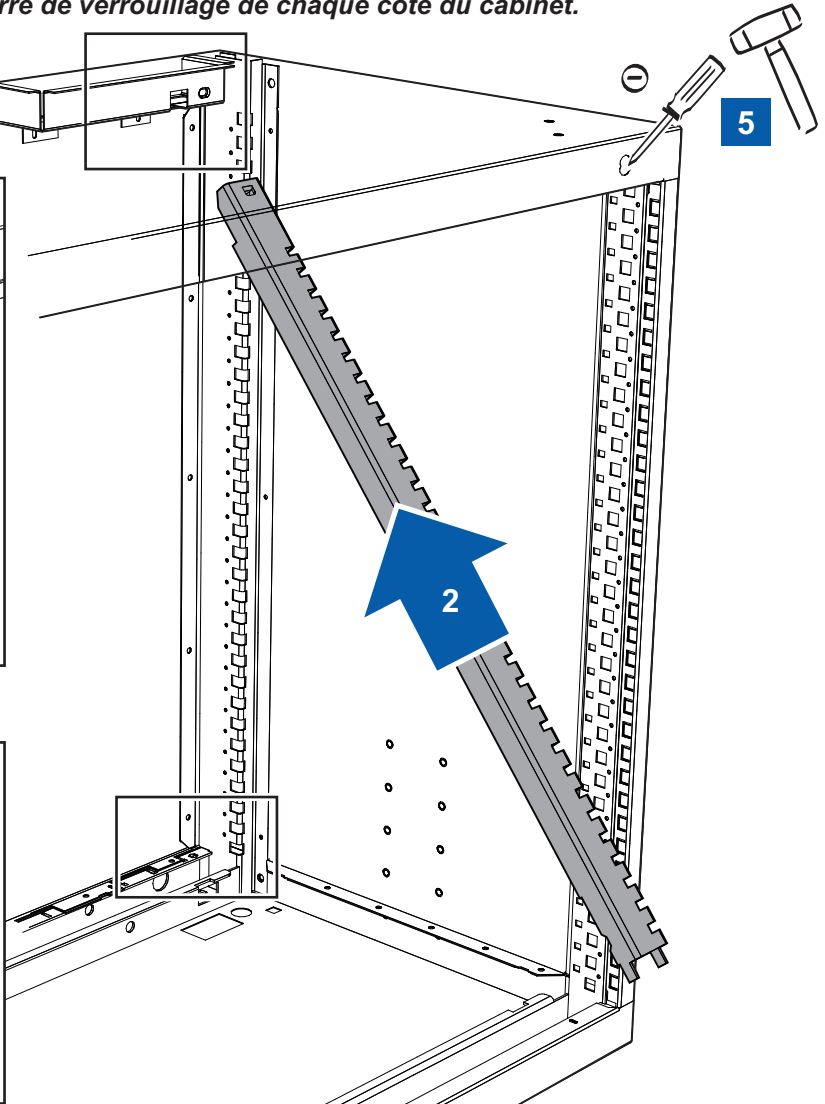


1

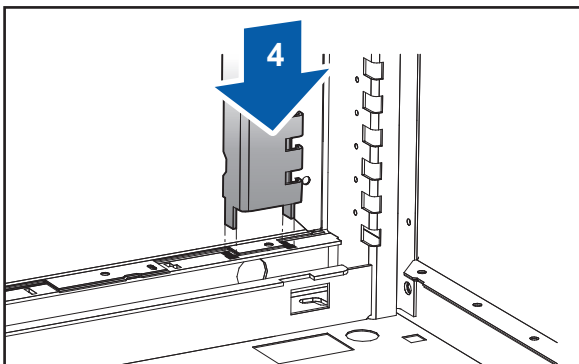
Assembly one locking bar on each side of the cabinet.  
*Assembler une barre de verrouillage de chaque côté du cabinet.*



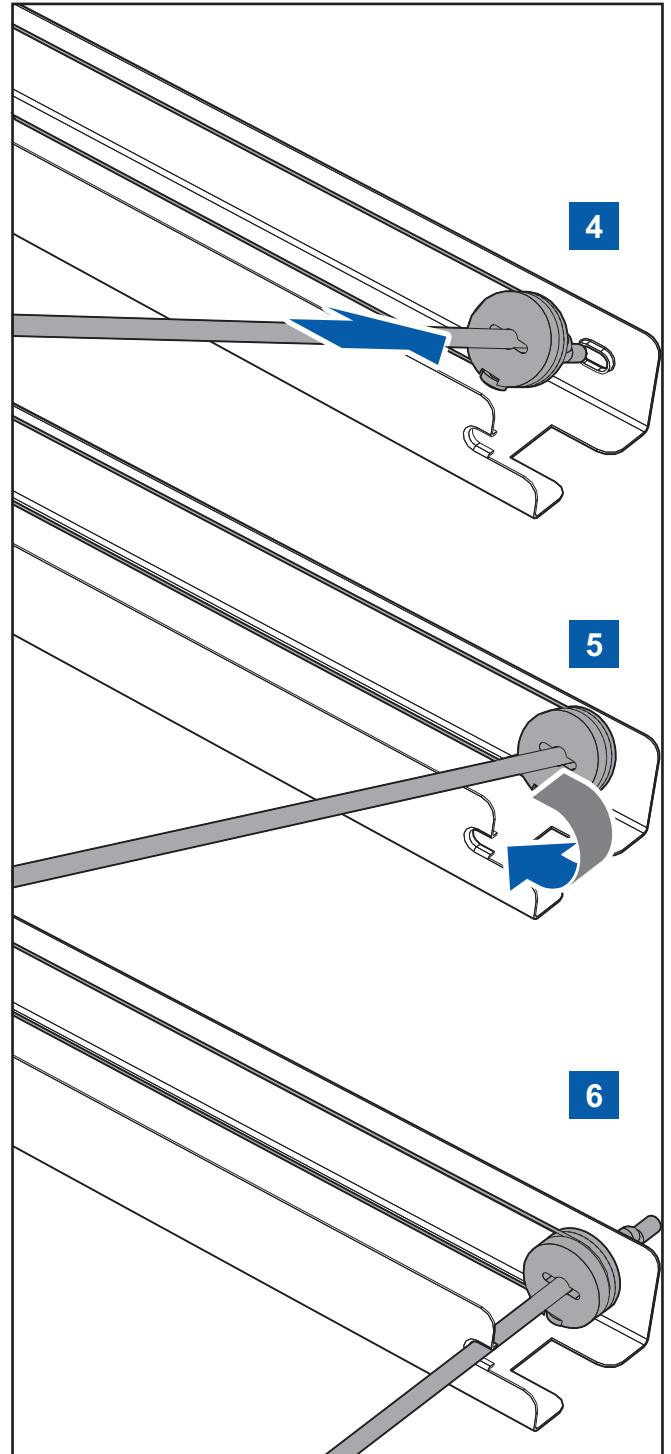
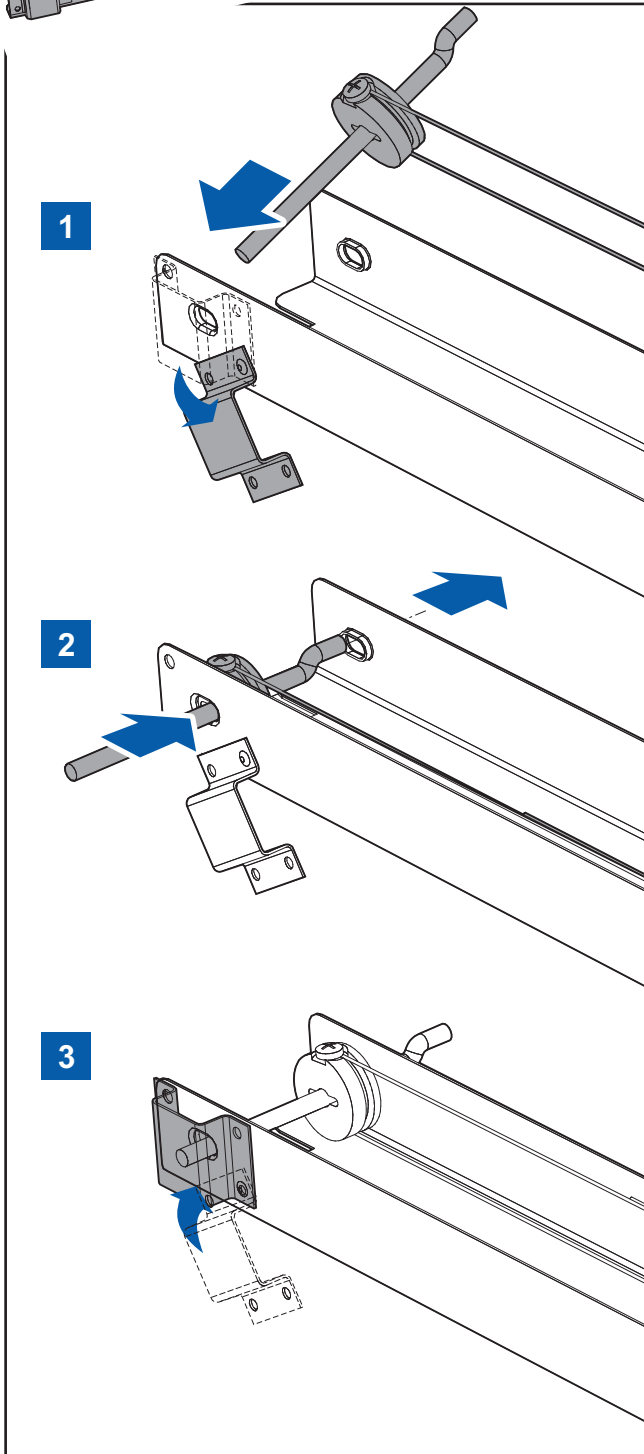
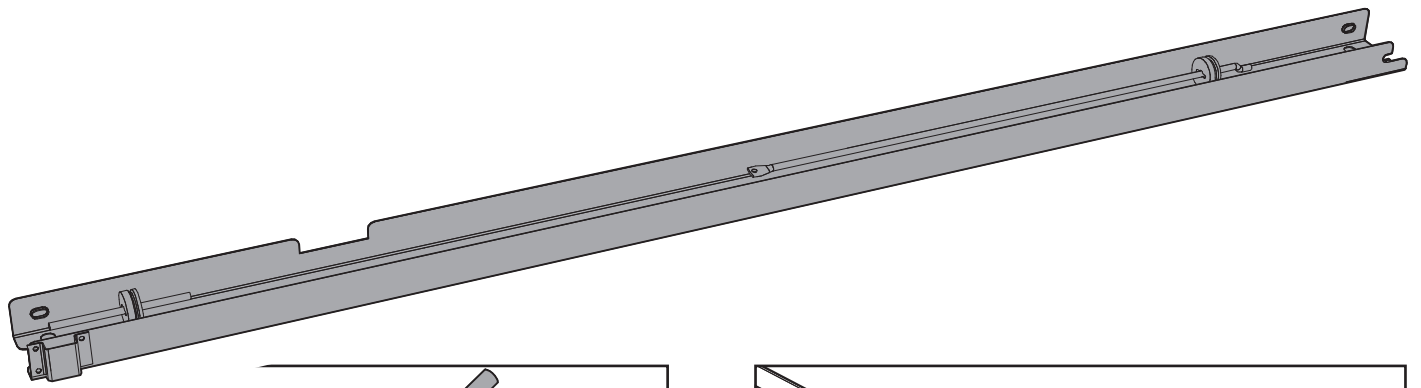
3

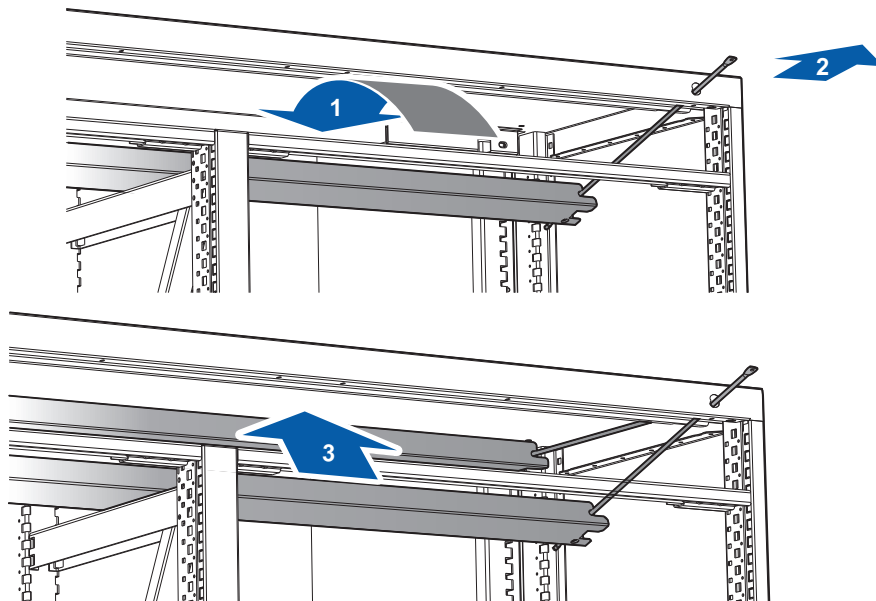


5



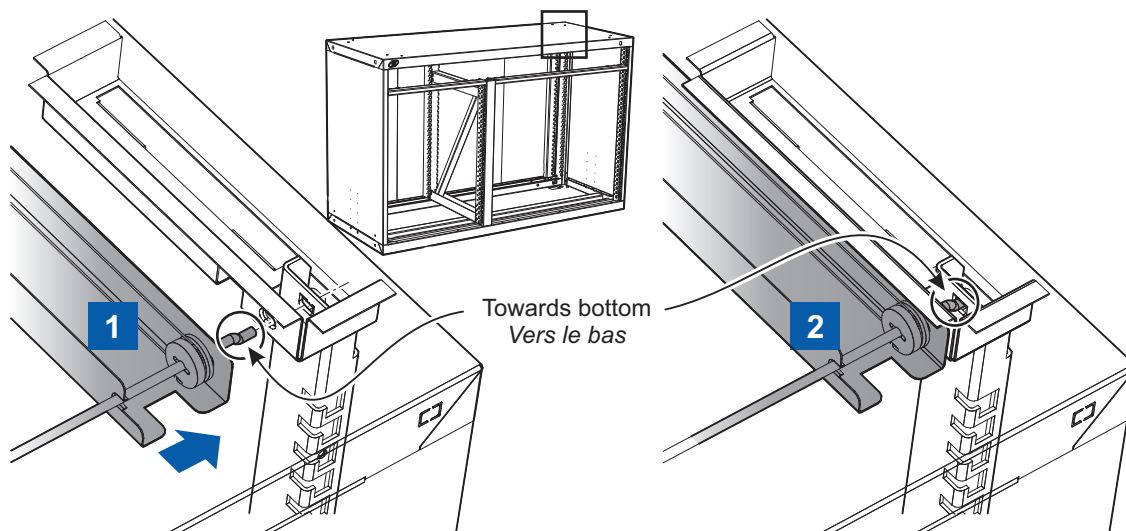
4





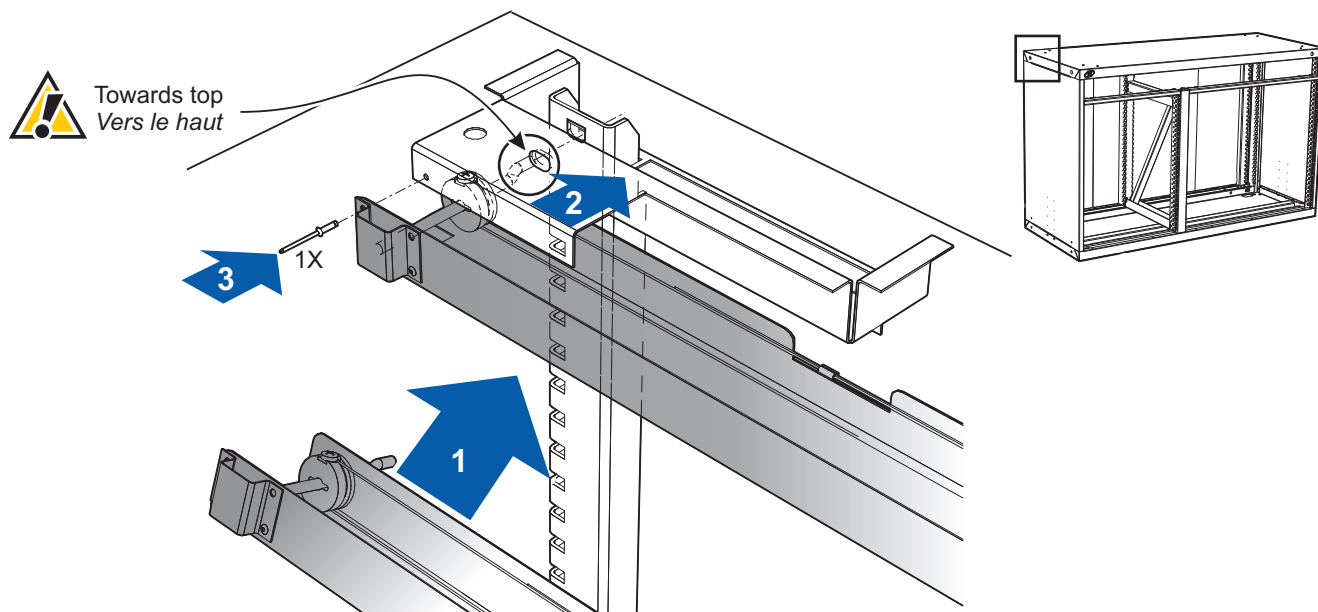
Mechanism - Right Side Assembly

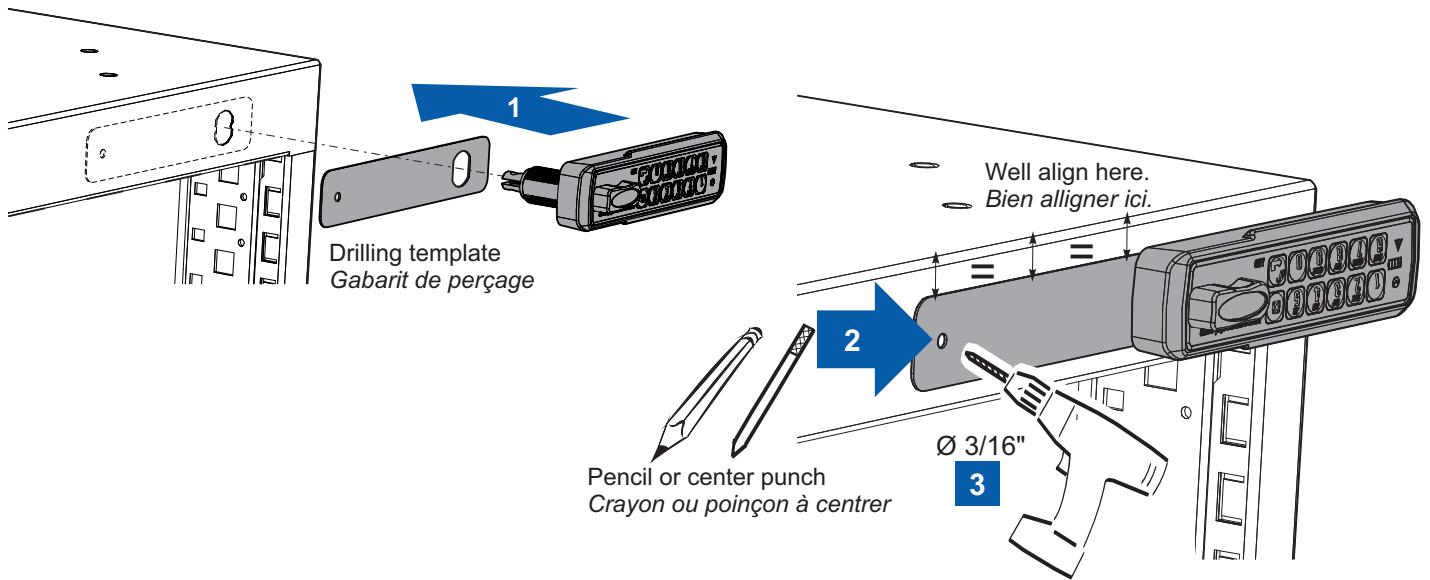
Mécanisme - Assemblage du côté droit



Mechanism - Left Side Assembly

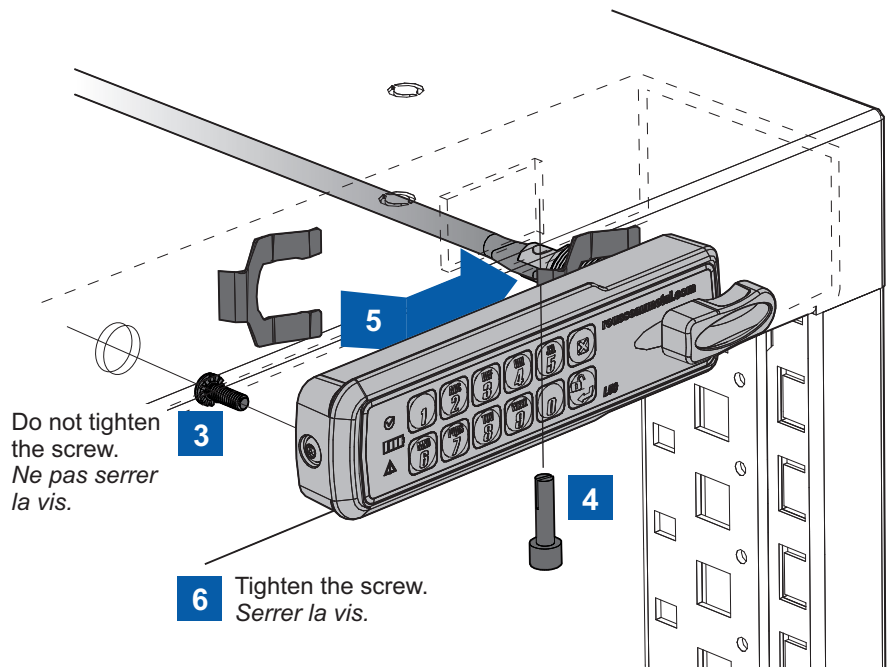
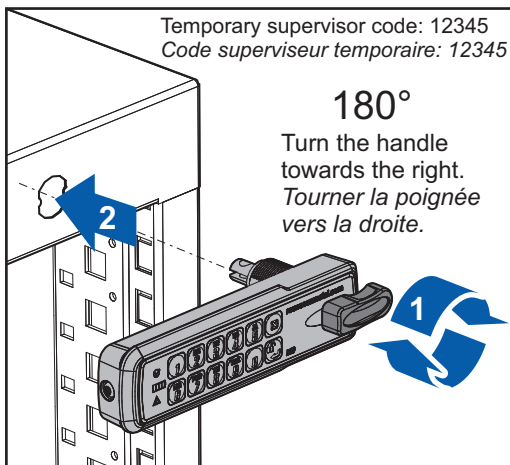
Mécanisme - Assemblage du côté gauche





Mechanism - Electronic Lock

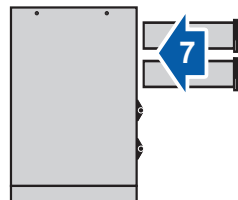
Mécanisme - Serrure électronique



Final Step

Étape finale

- Make sure to unlock the mechanism and replace all drawers into the cabinet.



- S'assurer que le mécanisme est en position déverrouillée et replacer tous les tiroirs dans le cabinet.